

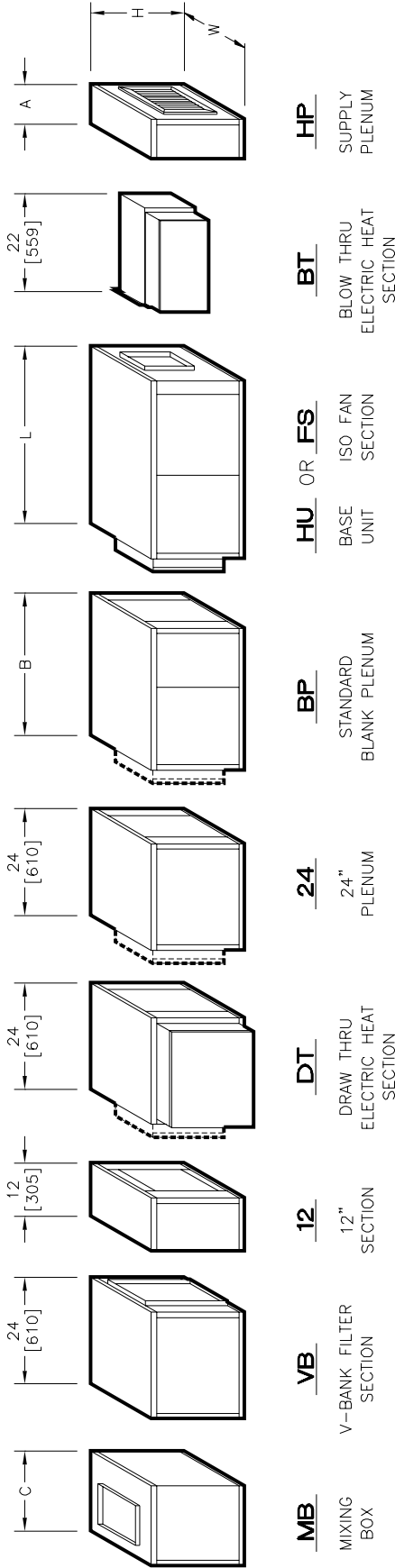
Model H & V



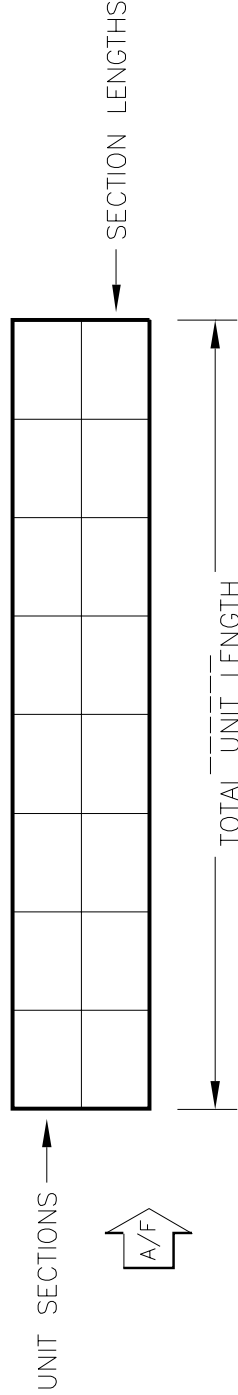
Horizontal and Vertical

BELT DRIVE **AIR HANDLING UNITS** **QUICK REFERENCE GUIDE**

 **ENVIRO-TEC**[®]
ENGINEERING FOR EXCELLENCE



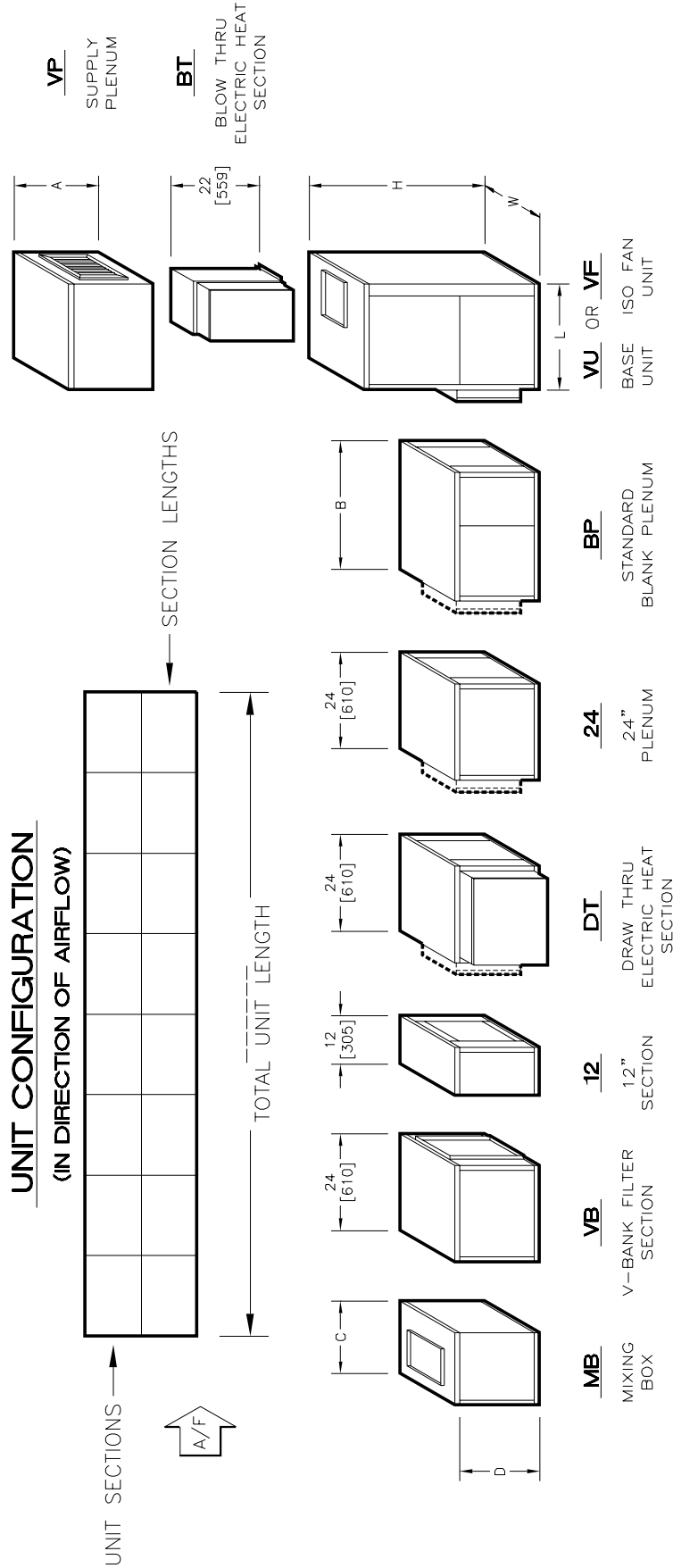
UNIT CONFIGURATION (IN DIRECTION OF AIRFLOW)



- NOTES:**
- All dimensions are inches [millimeters].
All dimensions are ± 1/4" [6mm].
Metric values are soft conversion.
 - See Drawing BR-001 for rigging hole and base rail details.
 - This drawing for identification of unit configuration only. See individual unit and section drawings for submittal details.
 - Flat filter rack will be located as required.
 - Supply plenum may not be combined with blow thru electric heat option.

DIMENSIONS - In [mm]

UNIT SIZE	H	W	L			A	B	C	NOMINAL CFM
			STD	INT	ISO				
08	21 [533]	30 [762]	40 [1016]	32 [813]	9 [229]	32 [813]	18 [457]	800	
12	21 [533]	36 [914]	40 [1016]	32 [813]	9 [229]	32 [813]	18 [457]	1200	
16	21 [533]	44 [1118]	40 [1016]	32 [813]	12 [305]	32 [813]	18 [457]	1600	
20	21 [533]	50 [1270]	40 [1016]	32 [813]	12 [305]	32 [813]	21 [533]	2000	
25	30 [762]	59 [1499]	46 [1168]	38 [965]	15 [381]	38 [965]	21 [533]	2500	
30	30 [762]	59 [1499]	46 [1168]	38 [965]	15 [381]	38 [965]	21 [533]	3000	
40	30 [762]	68 [1727]	46 [1168]	38 [965]	15 [381]	38 [965]	24 [610]	4000	
50	30 [762]	80 [2032]	46 [1168]	38 [965]	15 [381]	38 [965]	24 [610]	5000	
60	30 [762]	89 [2261]	46 [1168]	38 [965]	15 [381]	38 [965]	24 [610]	6000	
80	36 [914]	102 [2591]	46 [1168]	38 [965]	15 [381]	38 [965]	27 [686]	8000	



- NOTES:**
- All dimensions are inches [millimeters]. All dimensions are $\pm 1/4"$ [6mm]. Metric values are soft conversion.
 - See Drawing BR-001 for rigging hole and base rail details.
 - This drawing for identification of unit configuration only. See individual unit and section drawings for submittal details.
 - Flat filter rack will be located as required.
 - Supply plenum may not be combined with blow thru electric heat option.

DIMENSIONS - In [mm]

UNIT SIZE	H		W	L	A	B	C	D	NOMINAL CFM
	STD	INT ISO							
08	44 [1118]	47 [1194]	30 [762]	24 [610]	12 [305]	32 [813]	18 [457]	21 [533]	800
12	44 [1118]	47 [1194]	36 [914]	24 [610]	12 [305]	32 [813]	18 [457]	21 [533]	1200
16	44 [1118]	50 [1270]	44 [1118]	24 [610]	14 [356]	32 [813]	18 [457]	21 [533]	1600
20	50 [1270]	53 [1346]	50 [1270]	30 [762]	16 [406]	32 [813]	21 [533]	21 [533]	2000
25	50 [1270]	56 [1422]	59 [1499]	30 [762]	16 [406]	38 [965]	21 [533]	30 [762]	2500
30	56 [1422]	59 [1499]	59 [1499]	30 [762]	16 [406]	38 [965]	21 [533]	30 [762]	3000
40	59 [1499]	62 [1575]	68 [1727]	30 [762]	18 [457]	38 [965]	24 [610]	30 [762]	4000
50	59 [1499]	62 [1575]	80 [2032]	30 [762]	18 [457]	38 [965]	24 [610]	30 [762]	5000
60	59 [1499]	62 [1575]	89 [2261]	30 [762]	18 [457]	38 [965]	24 [610]	30 [762]	6000
80	65 [1651]	71 [1803]	102 [2591]	30 [762]	20 [508]	38 [965]	27 [686]	36 [914]	8000



6750 Bryan Dairy Rd. • Largo, FL 33777
www.enviro-tec.com
727-541-3531

©1998 Environmental Technologies, Inc.
Stock ID: CAT-REF-BDAHU
December, 1998

Research & Development, Engineering, and Manufacturing.

- Variable Volume Terminals
- Fan Coils
- Air Handling Units
- Coils
- Electric Heating Devices
- Electronic Controls